



Push-Pull Switches

Universal

Magneto

Two Speed Axle

Headlamp

Heater

Plasticized



Heavy Duty Universal Push-Pull Switches • One Circuit • SPST • Off-On, Normally Off

Electrical Rating: 10 amps at 12 VDC • For 6-36 VDC electrical systems • Mounting hardware included.

No. 5007

Mounting stem: aluminum, 3/8"-32 thread, 5/8" (15.87mm) long.

Knob: tan plastic with 10-32 threaded metal insert.

Terminals: two screw.

Case: plated steel.

⊖ **No. 50031** Same as No. 5007 except with two blade terminals and ivory plastic knob.



No. 5011

Mounting stem: steel, 3/8"-32 thread, 5/8" (15.87mm) long.

Knob: chrome plated.

Terminals: two screw.

Case: plated steel.



No. 50072

Same as No. 5011 except with silver laminated contacts and two bullet terminals.

No. 50070

Same as No. 5011 except with two blade terminals.

No. 5053

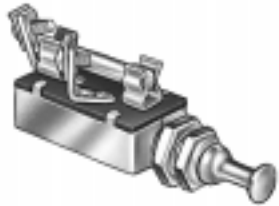
Mounting stem: steel, 1/2"-20 thread, 5/8" (15.87mm) long.

Knob: integral chrome plated.

Terminals: two screw.

Case: plated steel.

Fuse: 20 amp SFE.



⊖ **No. 5067** Same as No. 5053 except with ivory plastic knob.



No. 50077

Mounting stem: brass, 7/16"-28 thread, 5/16" (7.94mm) long.

Knob: black plastic with 10-32 threaded metal insert.

Terminals: two screw.

Case: zinc.

Sealing: O-ring in stem and gasket sealed terminal insulator.



⊖ **No. 50079**

Mounting stem: brass, 7/16"-28 thread, 5/16" (7.94mm) long.

Knob: black plastic with 10-32 threaded metal insert.

Terminals: one screw and one stud.

Case: zinc.

Sealing: O-ring in stem, gasket sealed terminal insulator.

Circuit breaker: 30 amp.

One Circuit Universal Push-Pull Switch • SPST • On-Off, Normally On

Electrical Rating: 10 amps at 12 VDC • For 6-36 VDC electrical systems • Mounting hardware included.

No. 50046

Mounting stem: aluminum, 3/8"-32 thread, 5/8" (15.87mm) long.

Knob: black plastic with threaded metal insert.

Terminals: two screw.

Case: plated steel.



Extra Heavy Duty Universal Switches • One Circuit • SPST • Off-On, Normally Off

Electrical rating: 20 amps at 12 VDC • For 6-36 VDC systems • Mounting hardware included.

No. 50001

Mounting stem: brass, 1/2"-20 thread, 5/8" (15.87mm) long.

Knob: black plastic, 10-32 thread and set screw.

Terminals: two screw.

Case: plated steel.

Contacts: silver laminated.



No. 50002

Same as No. 50001 except with chrome plated brass integral knob.

No. 50066

Same as No. 50001 except with O-ring seal in stem and gasket sealed terminal insulator.

Heavy Duty Universal Switches • Two Circuit • DPST • Off-On, Normally Off

Electrical rating: 10 amps at 12 VDC • For 6-36 VDC electrical systems • Mounting hardware included.
Energize two independent circuits simultaneously.

⊖ No. 50047

Mounting stem: brass, 3/8"-32 thread, 5/8" (15.87mm) long.
Knob: ivory plastic, 10-32 thread.
Terminals: four screw.
Case: plated steel.



No. 50047-01

Same as No.50047-01 except with plated steel mounting stem 1/2"-20 thread, 5/8" (15.87mm) long and chrome plated integral knob.

— Heavy Duty Universal Switches • Two Circuit • SPDT • Off - On Circuit #1 - On Circuit #2 —

Electrical rating: 10 amps at 12 VDC • For 6-36 VDC electrical systems • Mounting hardware included.
Energize two circuits alternately from a common feed.

No. 5066

Mounting stem: steel, 1/2"-20 thread, 5/8" (15.87mm) long.
Knob: integral, chrome plated.
Terminals: three screw.
Case: plated steel.



No. 50082

Same as No. 5066 except with three blade terminals.



— Extra Heavy Duty Universal Switches • Two Circuit • SPST • Off-On, Normally Off —

Electrical rating: 18 amps at 12 VDC • For 6-36 VDC electrical systems • Mounting hardware included.
Energize two circuits simultaneously from a common feed.

⊖ No. 5015

Mounting stem: plated steel, 1/2"-20 thread, 5/8" (15.87mm) long.
Knob: chrome plated brass, integral.
Terminals: three blade.
Case: plated steel.
Contacts: silver.



No. 5027

Same as 5015 except with three screw terminals and ivory plastic knob imprinted "Lights" with 10-32 thread and set screw.

— Extra Heavy Duty Two Circuit Universal Switch with Circuit Breaker —
SPST • Off-On, Normally Off

Electrical rating: 20 amps total. • For 6-36 VDC electrical systems • Mounting hardware included.
Energizes two circuits simultaneously from a common feed.

No. 5050

Mounting stem: plated steel, 1/2"-20 thread, 5/8" (15.87mm) long.
Knob: black plastic 10-32 thread with set screw, imprinted "Lights".
Terminals: two screw and one stud.
Case: plated steel.
Contacts: silver surfaces.
Circuit breaker: 30 amps.
Available with other amperage circuit breakers.



— Medium Duty Universal Switch • Two Circuit • SPDT • On-On —

Electrical rating: 8 amps at 12 VDC • For 6-36 VDC electrical systems • Mounting hardware included.
Energizes two circuits alternately from a common feed.

⊖ No. 5065

Mounting stem: plated steel, 1/2"-20 thread, 5/8" (15.87mm) long.
Knob: integral, chrome plated brass.
Terminals: three screw.
Case: plated steel.



Heavy Duty Heater Switch Two Circuit, Single Pole • Off - On (Low Speed) - On (High Speed)

Electrical rating: 10 amps at 12 VDC • For 6-36 VDC electrical systems • Mounting hardware included.
Energizes two circuits alternately from a common feed.

No. 50071

Mounting stem: plated steel, 1/2"-20 thread, 1/4" (6.35mm) long.

Knob: integral, chrome plated brass.

Terminals: three female bullet.

Case: plated steel.



Heavy Duty Magneto Switches • One Circuit

Electrical rating: 10 amps at 12 VDC • For 6-36 VDC electrical systems • Mounting hardware included.

Mounting stem: aluminum, 3/8"-32 thread, 5/8" (15.87mm) long.

Knob: integral, nickel plated brass.

Terminal: one screw.

Case: plated steel.



⊖ No. 50040

IN-RUN (mag. term. open)

OUT-OFF (mag. term. grounded).



No. 50203

IN-OFF (mag. term. grounded)

OUT-RUN (mag. term. open).

Extra Heavy Duty Headlamp Switch • Two Circuit • SPST • Off-On, Normally Off

Electrical rating: 30 amps at 12 VDC • For 6-36 VDC electrical systems • Mounting hardware included.
Energizes two circuits simultaneously from a common feed for headlamps and taillamps.

No. 50088

Mounting stem: brass, 7/16"-28 thread, 5/16" (7.94mm) long.

Knob: black plastic, 10-32 thread with set screw.

Terminals: three screw.

Case: zinc.

Sealing: gasket under terminal insulator.

Contact surfaces: silver.



Two Speed Axle Switch • Two Circuit On-On

For 12 VDC electrical systems.

No. 50036

Mounting: on gear shift lever with clamp.

Knob: red plastic, 1 1/4" diameter.

Terminals: three female bullet.

Case: zinc, with protective rubber boot.

Used with No. 9283 terminal block limit switch and No. 40102 connector and cable assembly.

Replaces: **Diamond T/Reo** 9935-H, 319305 **Dodge** 1390517
Eaton 32861 **Ford** 8QH-4078, SW-1535 **G.M.C.** 2274282
I.H.C. 79348-R91 **Mack** IMR-2101 **White** 716913



Terminal Block Limit Switch

No. 9283

Controls Eaton two speed axle shift.

Used in conjunction with Cole Hersee No. 50036 two speed axle switch.

Mounts in axle shift motor housing.

Heavy plastic insulator base.

Two #8-32 studs 3/4" (19.05mm) long and two #8-32 studs 7/32" (5.55mm) long.

Replaces: **Chevrolet** 2279014, 3854312

Diamond T/Reo 9913-H, 356005 **Dodge** 1390517, 1508375,
1508404 **Eaton** 32382, 32414, 62252 **Ford** B2Q-4107-A,
SW-1536 **G.M.C.** 2279002 **I.H.C.** 79050-R91 **White** 716920



Connector & Cable Assembly

No. 40102

Wire harness connects No. 9283 terminal block limit switch and No. 50036 two speed axle switch.

Replaces: **Eaton** 38810

Ford FAB-14668-B



Drive Screw Assembly

No. 40103

Screw assembly operates No. 9283 terminal block limit switch.

Replaces: **Chevrolet** & **G.M.C.** 2279003 **Diamond T/Reo** 9920-H,
3563-D5 **Eaton** 32364 **Ford** 8QH-4086-A
I.H.C. 79037-R11 **White** 716925



Heavy Duty Marine Construction Switches • One Circuit • SPST • Off - On, Normally Off

Electrical rating: 10 amps at 12 VDC • For 6-36 VDC electrical systems • Mounting hardware included.

Mounting stem: brass, 3/8"-32 thread, 1 1/4" (31.75mm) long.

Panel thickness: through 3/4" (19.05mm) thick.

Case: brass.

Gasket Sealed Case



No. M-482

Terminals: two brass screw.

Knob: chrome plated brass.



No. M-482-01

Terminals: two brass blade.

Knob: chrome plated brass.

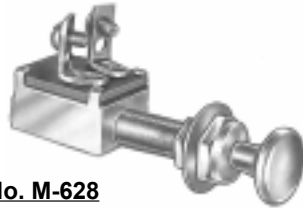


No. M-482-02

Terminals: two brass screw.

Knob: black plastic with 10-32 thread and set screw.

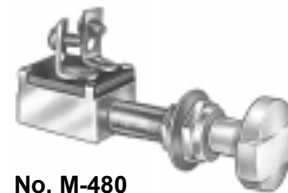
Standard Case



No. M-628

Terminals: two brass screw.

Knob: chrome plated brass, 10-32 thread.



No. M-480

Terminals: two brass screw.

Knob: ivory plastic, 10-32 thread.

— **Marine Construction Plasticized Switch • One Circuit • SPST • Off-On, Normally Off** —

Electrical rating: 10 amps at 12 volts VDC • For 6-36 VDC systems • Brass mounting hardware included.

No. M-606

Case: brass, plasticized.

Terminations: two insulated copper wire leads, 12" (304.80mm) long.

Knob: chrome plated brass 10-32 thread.

Mounting stem: brass, 3/8"-32 thread, 1 1/4" (31.75mm) long.

Panel thickness: through 5/8" (15.87mm) thick.



— **Heavy Duty Marine Construction Switch • One Circuit • SPST • On-Off, Normally On** —

Electrical rating: 10 amps at 12 volts, D.C. • For 6-36 VDC systems • Brass mounting hardware included.

No. M-530

Case: brass.

Sealing: gasket seal in case.

Terminals: two brass screw.

Knob: chrome plated brass.

Mounting stem: brass, 3/8"-32 thread, 1 1/4" (31.75mm) long.



Heavy Duty Marine Construction Switches
Two Circuit • SPDT • On-On

Electrical rating: 10 amps at 12 volts, D.C. • For 6-36 VDC systems • Brass Mounting hardware included.

No. M-630

Case: brass.

Terminals: three screw

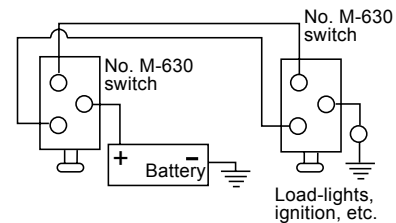
Mounting stem: brass, 3/8"-32 thread, 1 1/4" (31.75mm) long.

Panel thickness: through 1" (25.40mm) thick.

Mounting hardware: brass face nut, washer and hex nut.



Typical wiring diagram for using two No. M-630 switches to control same circuit from either of two locations.


Two Circuit • SPST • Off-On, Normally Off

Electrical rating: 10 amps at 12 volts, D.C. • For 6-36 VDC systems • Brass Mounting hardware included.

No. M-527

Case: brass.

Terminals: three brass screw.

Knob: chrome plated brass, 10-32 thread.

Mounting stem: brass, 3/8"-32 thread, 1 1/4" (31.75mm) long.

Panel thickness: through 1" (25.40mm) thick.

Mounting hardware: brass face nut, washer and hex nut.


Three Circuit • SPDT • Off - On #1 & #2 - On #1 & #3 Normally Off

Electrical rating: 10 amps at 12 volts, D.C. • For 6-36 VDC systems • Brass Mounting hardware included.

No. M-532

Case: brass.

Terminals: four brass screw.

Knob: chrome plated brass, 10-32 thread.

Mounting stem: brass, 3/8"-32 thread, 1 1/4" (31.75mm) long.

Panel thickness: through 1" (25.40mm) thick.

Mounting hardware: brass face nut, washer and hex nut.


Two Circuit • Single Pole • Off - On #1 - On #2, Normally Off

Electrical rating: 10 amps at 12 volts, D.C. • For 6-36 VDC systems • Brass Mounting hardware included.

No. M-531

Case: brass.

Terminals: three screw

Mounting stem: brass, 3/8"-32 thread, 1 1/4" (31.75mm) long.

Panel thickness: through 1" (25.40mm) thick.

Mounting hardware: brass face nut, washer and hex nut.

