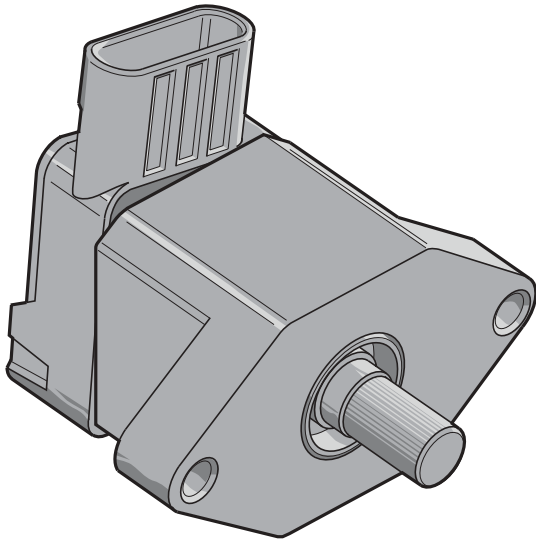


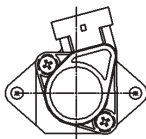
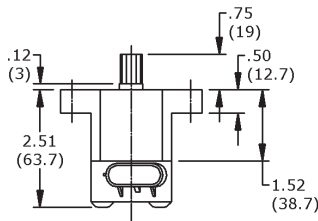
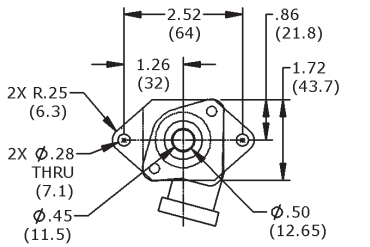
WM531 Remote Sensor Assembly



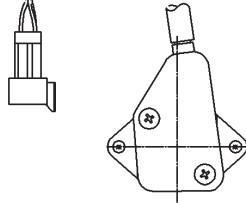
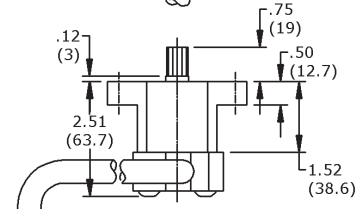
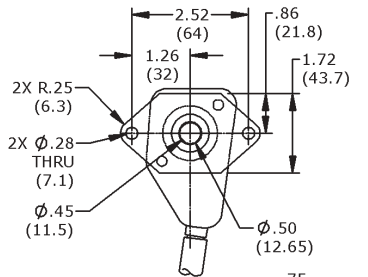
Features and Specs

- Mechanical over electronic control
- Weight: 1 lb (0,46 kg)
- Sensor outputs conform to engine manufacturer specifications

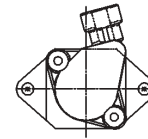
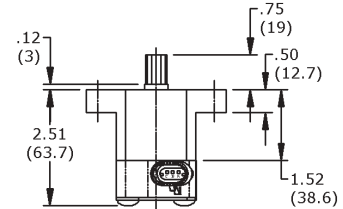
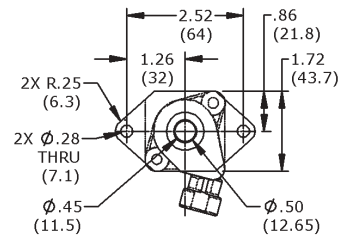
Dimensional Data



131032


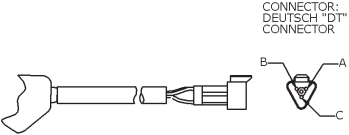





131520



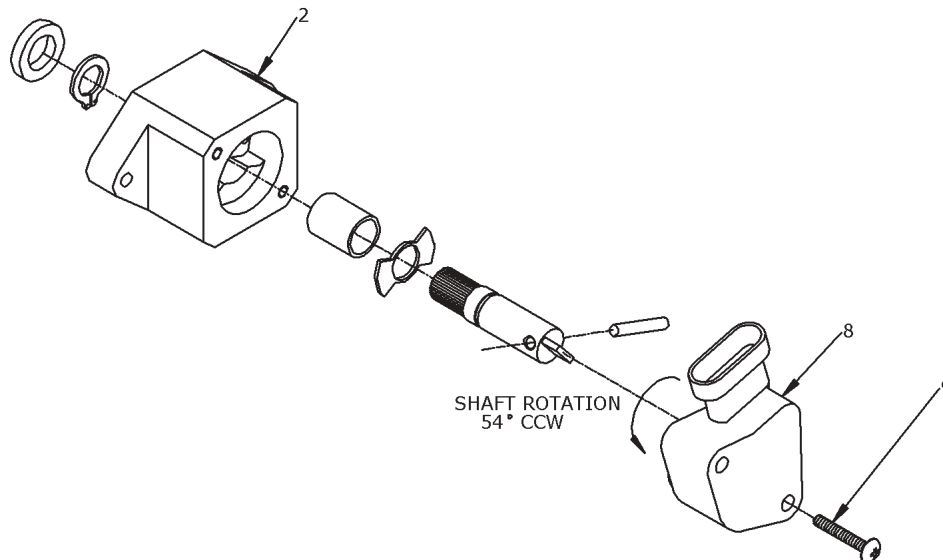
131521

Sensor & Connector Information

ENGINE / P/N	SENSOR	WIRING HARNESS / CONNECTORS
CATERPILLAR 131520		 <p>CONNECTOR: DEUTSCH "DT" CONNECTOR</p> <p>PIN A---RED---SUPPLY PIN B---BLACK---GROUND PIN C---WHITE---SIGNAL</p>
CUMMINS NAVISTAR, DDEC III (W/ IDLE VALIDATION SWITCH*) 131032		<p>P/N 131165**</p> <p>PIN F---ORANGE---IVS SUPPLY (5V) PIN E---BLUE---IDLE ACTIVE PIN D---GREEN---THROTTLE ACTIVE PIN C---RED---APS SUPPLY (5V) PIN B---WHITE---APS GROUND PIN A---BLACK---APS SIGNAL</p> <p>CONNECTOR A: PACKARD ELECTRIC "METRI PACK"</p> <p>CONNECTOR B: PACKARD ELECTRIC "WEATHER PACK"</p> <p>PIN B---BLACK---APS SIGNAL PIN A---WHITE---APS GROUND PIN C---RED---APS SUPPLY (5V)</p> <p>PIN C---GREEN---THROTTLE ACTIVE PIN B---BLUE---IDLE ACTIVE PIN A---ORANGE---IVS SUPPLY (5V)</p> <p>CONNECTOR C: PACKARD ELECTRIC "METRI PACK"</p>
DDEC II 131521		<p>P/N 130063**</p> <p>CONNECTOR A: PACKARD ELECTRIC "METRI PACK"</p> <p>CONNECTOR B: PACKARD ELECTRIC "WEATHER PACK"</p>
DDEC III (W/O IDLE VALIDATION SWITCH*) 131522		<p>PIN C---WHITE---GROUND PIN B---BLACK---APS SIGNAL PIN A---RED---SUPPLY</p> <p>PIN A---WHITE---GROUND PIN B---BLACK---APS SIGNAL PIN C---RED---SUPPLY</p>

* Idle validation is an option for DDEC III applications
 **Wiring harness for remote sensor assemblies must be ordered separately

Exploded View & Parts



Exploded View & Parts (continued)

Item	Part No.	Description	Cummins/Mercedes 131032	Navistar 132330	Caterpillar 132052	Caterpillar 131520	DDEC II 131521	DDEC III & IV 131522	Caterpillar 132056	DDEC II, III, IV 132114
2	132144	Housing	1	1	1	1	1	1	1	1
8	131856	Sensor	1							
8	131040	Sensor		1						
8	132446	Sensor				1				
8	130656	Sensor					1			
8	119454	Sensor						1		
9	131308	Screw	2	2	2	2	2	2	2	2

Serviceable items are identified above.

Service Kit Information

Part Number	Sensor Service Kit	Item Numbers
131032 Cummins/Mercedes North America	131973	8, 9
132330 Navistar	131490	8, 9
131520 Caterpillar	132484	8, 9
131521 DDEC II	131167	8, 9
131522 DDEC III & IV	130800	8, 9

To Order

To order a WM531 model, select part number from the chart below.

Engine Application	Part Number	Wiring Harness (must be purchased separately)
Cummins w/132354 Sensor Mercedes North America	131032	131165
International w/131040 Sensor	132330	131166
Caterpillar 54°, No Sensor	132052	None
Caterpillar 54° w/8v Sensor	131520	None
Caterpillar Adjustable, No Sensor	132056	None
DDEC II w/o IVS, w/130656 Sensor	131521	130063
DDEC III & IV w/o IVS, w/119454 Sensor	131522	130063
DDEC II, III, IV No Sensor	132144	None