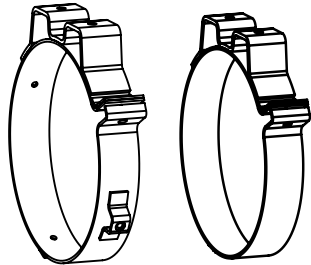


Clamp Notes:

- Pinch bolts are not included
- Most use 3/8-1-1/2" long grade 5 or 8 grade bolts
- Band width 1.25" (unless noted)
- Reuse existing frame mounting bolts
- Materials are either zinc-plated or aluminized mild steel.

Muffler Body Band Clamps



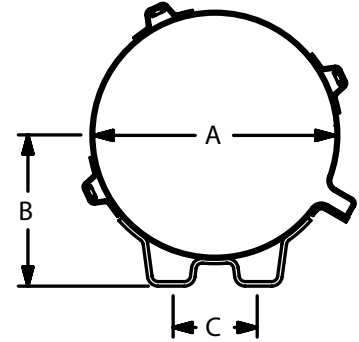
P227803

P230281
No heat shield stand off

- Use for vertical or horizontal mounting
- Band width 1.25" (32mm)
- Bolts not included

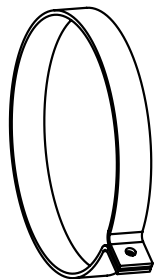
W-Foot Body Bands for Heat Shield Applications

---- A ----		---- B ----		---- C ----		Part Number
in	mm	in	mm	in	mm	
10.00	254	6.28	160	3.5	89	P227803
11.00	269	6.50	165	6.5	165	P229513
13.00	330	7.75	197	6.5	165	P230283



W-Foot Body Bands (no heat shield)

---- A ----		---- B ----		---- C ----		Part Number
in	mm	in	mm	in	mm	
10.00	254	6.28	160	3.5	89	P230282
11.00	269	6.50	165	6.5	165	P230281
13.00	330	7.75	197	6.5	165	P230045

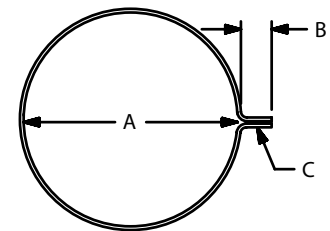


P227804

- Schools bus retrofits

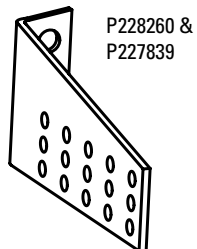
---- A ----		---- B ----		---- C ----		Part Number
in	mm	in	mm	in	mm	
10.00	256	1.75	44	.40	10	P228241 ⁽¹⁾
11.00	279	1.75	44	.40	10	P227804 ⁽²⁾

1. Bluebird conventional bus with Cat Engine Works
2. Bluebird rear engine bus



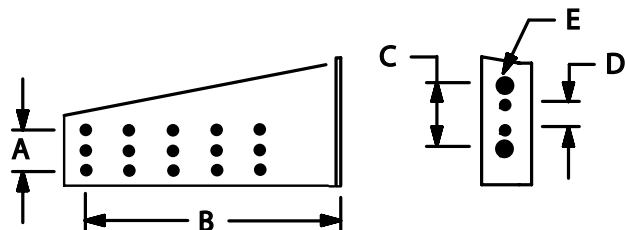
Band width 1.5" (38mm)

Universal Horizontal Hangers



P228260 & P227839

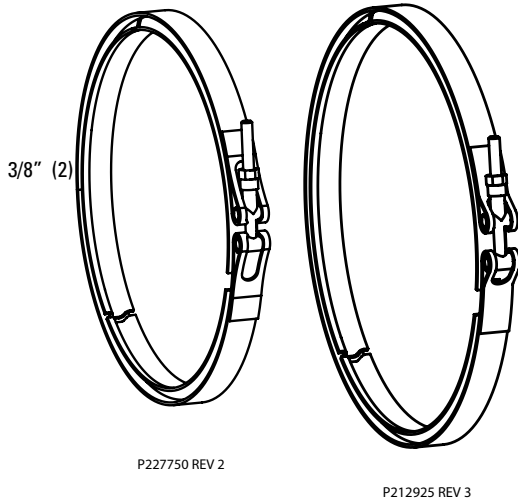
- Schools buses retrofits
- Corner mount with two bolts



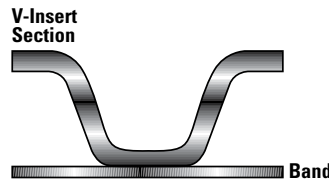
---- A ----		---- B ----		---- C ----		---- D ----		---- E ----		Part Number
in	mm	in	mm	in	mm	in	mm	in	mm	
1.30	33	5.31/9.94	135/252	2.50	64	1.26	32	.50	.13	P227839 ⁽³⁾
1.62	41	2.94/9.94	75/252	2.50	64	1.00	25	50/75	13/19	P228260

3. Bracket holes are .62" x .35" slots

V-Band Muffler Connector Clamp



- The V-band clamp is a common clamp for all diesel retrofit muffler styles (DPF, LTF, DMF, and DOC)
- The unique design reduces service time creates a reliable, leak-free seal between components
- Piloted v-insert section, facilitates reassembly and alignment for clamping

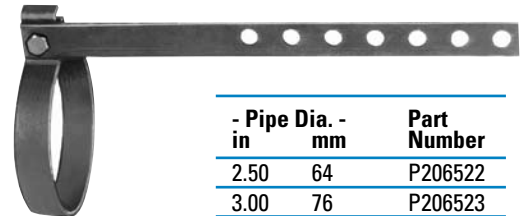


Cross Section

- Body Dia. -		Part Number
in	mm	
10.0	254	P227750
11.0	279	P212925
13.0	303	P229851

Pipe Hangers

- Pre-punched holes (.41" dia.) for easy installation
- 12 gauge hot rolled steel construction
- 12" overall bar length, width .88"
- 3/8"-16 UNC bolts/nuts included



- Pipe Dia. -		Part Number
in	mm	
2.50	64	P206522
3.00	76	P206523
3.50	89	P206524
4.00	102	P206525
5.00	127	P206526

Universal Swivel Hanger

- Heavy reinforced rubber pad
- Double pivot design improves flexibility and installation
- One piece construction installs in seconds
- 11 gauge cold rolled steel construction
- Bolt hole size .4" x .5"



P206507 - 9" length
J008167 - 13" length

The following products are currently stock items at the Donaldson distribution center and available to all authorized Emissions Dealers and Donaldson Engine Aftermarket Distributors.

Offset MaxGrip™ Bent Bolt Clamp

Donaldson introduces a new series of bent bolt clamps for use on exhaust systems. The clamps are manufactured in heavy duty aluminized steel to minimize corrosion.

- Clamps are reusable
- Aluminized band, stainless steel welds, deburred strap edges and finished with a heat resistance paint
- Self positioning for easy installation
- Protected by patents, both issued and pending



Offset MaxGrip Bent Bolt

For Muffler to Stack Connections

Nominal I.D. in	mm	Functional I.D. inches	Range mm	Part Number
4.00	102	4.04-4.21	103-107	M002164
5.00	127	5.04-5.21	128-132	M001865



Offset MaxGrip Bent Bolt

For Tube to Flex Connections

Nominal I.D. in	mm	Functional I.D. inches	Range mm	Part Number
4.00	102	4.04-4.21	103-107	M002134
5.00	127	5.04-5.21	128-132	M002135

MaxGrip™ Bent Bolt Clamp

- More holding power than any other clamp tested
- Donaldson patented technology
- Clamps are reusable
- Aluminized band, stainless steel welds, and deburred strap edges
- Use these clamps on slotted, lapped tube connections and manifold connections
- Ideal for use on Donaldson “captured” slots for maximum sealing
- Coated bolts and threads
- Hardened flange nuts



MaxGrip Bent Bolt Clamp

Nominal I.D. in	mm	Functional I.D. inches	Range mm	Part Number
1.75	44	1.79-1.96	45-50	M001866 ¹
2.00	51	2.04-2.21	52-56	M001867 ¹
2.50	64	2.54-2.71	65-69	M001756 ¹
3.00	76	3.04-3.21	77-82	M001702
3.50	89	3.54-3.71	90-94	M001502
3.75	95	3.73-3.90	95-99	M001593
3.88	99	3.89-4.06	99-103	M001432
4.00	102	4.04-4.21	103-107	M001503
4.25	108	4.21-4.38	107-111	M001566
4.50	114	4.54-4.71	115-120	M001703
5.00	127	5.04-5.21	128-132	M001668
5.25	133	5.21-5.38	132-137	M001504
6.00	152	6.04-6.21	153-158	M001505
6.25	159	6.21-6.38	158-162	M001799
6.75	171	6.83-7.00	173-178	M001506

¹ 1 - 1.12" (28 mm) band width. Use on 1" minimum slots. Requires 9/16" or 14mm wrench for installation.

All models except the M001866, M001867 and M001756 have 1.5" (38 mm) band. Use on 1.375" minimum slot. Requires 5/8" or 16mm wrench for installation.

SealClamp™ – The Original Band Clamp

- For overlapping I.D. to O.D. slotted joints and flex tube
- Nuts and bolts fit both 9/16” and 14mm wrenches
- Reduces noise and exhaust leaks
- Available in aluminized and stainless steel
- Stainless models have improved corrosion resistance and high temperature strength compared to aluminized



New Stepped Preformed SealClamp
Patent Pending

- Full 360° preformed
- No flex pipe pinching
- Available in stainless and aluminized

Stepped Preformed SealClamp

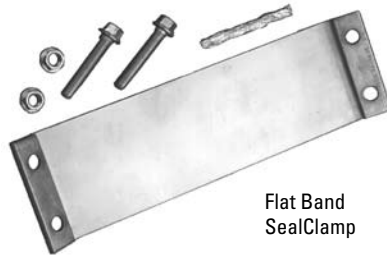
O.D. Pipe		Stainless	Aluminized
in	mm		
2.50	64	X007829	X007832
3.00	76	X007830	X007833
3.50	89	X007831	X007834
4.00	102	X007784	X007824
5.00	127	X007785	X007805
6.00	152	X009076	

Preformed & Flat Styles

Used to seal muffler inlets, outlets, elbow joints, flex pipes, and other system connections. Also minimizes noise and exhaust gas leaks.

SealClamps are easy to install! There's no need to weld or disconnect your exhaust system.

When installed, the wide band conforms to the shape of straight or flex pipe, and seals without distorting the pipe.



Flat Band SealClamp

Flat Band SealClamp

O.D. Pipe		Stainless	Aluminized
in	mm		
2.00	51	X004536	
2.25	57	X004537	
2.50	64	X004476	
2.75	70	X004538	
3.00	76	X004478	
3.50	89	X004480	X006204
4.00	102	X004482	X006203
4.50	114	X004962	
5.00	127	X004484	X006202
6.00	152	X004539	

Standard U-Bolt Clamps



- Single, round band
- 3/8-16” UNC-2A
- Cold rolled steel or Chrome

O.D. Pipe		Steel	Chrome
in	mm		
2.00	51	P206403	
2.25	57	P206404	
2.50	64	P206405	
2.75	70	P206406	
3.00	76	P206407	
3.25	83	P206408	
3.50	89	P206409	
4.00	102	P206410	J009486
5.00	127	P206411	J009487
6.00	152	P207667	

Accuseal®



- Use for connecting the Donaldson data logger

O.D. Pipe		Aluminized
in	mm	
2.00	51	J000204
2.25	57	J000205
2.50	64	J000206
2.75	70	J000207
3.00	76	J000200
3.50	89	J000201
4.00	102	J000202
4.50	114	J000208
5.00	127	J000203
6.00	152	J000209

Accuseal® is a registered trademark of Torca Co.

Universal Pipe Guards & Clamps

- 180° wrap coverage
- 48" (1219mm) length
- Polished stainless steel
- Shipped with protective film on one side
- Clamps must be ordered separately

Pipe Dia. in	mm	Stainless ¹	Clamp Kit
4.00	102	P206543	P206508
5.00	127	P206543	P206509
6.00	152	P206543	P224492

1 - requires clamp kit for installation



Pipe Guard Clamp Kits

- Two clamps per kit
- Chrome plated
- 12 gauge cold rolled steel construction

Muffler Guards

- Bright stainless shipped with protective film on one side
- Order clamps separately, unless noted otherwise

Muffler Guard Clamp Kits

- Two clamps per kit
- Chrome plated



Muffler Dia. in	mm	Part Number
8.50	216	P206510
9.00	229	P206511
10.00	254	P206512



Style 1



Style 2

-- Muffler Diameter --		Style	--- Length ---		Wrap	Bright Stainless	Chrome
in	mm		in	mm			
8.50 - 9.00	216-229	Style 2	51.00	1295	180°	P206540	
8.50 - 10.00	216-254	Style 1	45.00	1143	270°	X005207 ¹	
		Style 2	51.00	1295	180°	J009429	
10.00-10.50	254-267	Style 2	51.00	1295	180°	P206542	

1 - Includes two (2) clamps